

Localized Laryngeal Amyloidosis: A Case Report and Review of Literature

¹Reyad K. Alalem, ²Fatma Emaetig

¹Department of Otorhinolaryngology, Head and Neck Surgery

²Department of Pathology, Misurata Cancer Center, Misurata Medical University

Abstract: The larynx is a rare site of involvement by amyloidosis. We report one case of laryngeal amyloidosis. The patient was 50 years old female with history of persistent hoarseness of voice. Fiberoptic laryngoscopy used for diagnosis of benign laryngeal mass. Microlaryngeal Excision of the mass was done. Histopathological examination confirmed the diagnosis of amyloidosis. Appropriate follow up is an important part of the long term management of the disease.

Keywords: Histopathological examination, Microlaryngeal Excision, laryngeal amyloidosis.

1. INTRODUCTION

Amyloidosis is a benign, slowly progressive condition that is characterized by the presence of extracellular fibrillar proteins in a variety of organs and tissues. Localized deposition of amyloid may be observed in individual organs without any systemic involvement. The progressive accumulation of amyloid deposits interferes with the normal structure of affected tissues resulting eventually in impairment of their function. Localized deposition of amyloid protein is regarded to be the result of local synthesis rather than the deposition of light chains produced elsewhere in the human body.

Primary laryngeal amyloidosis is a rare lesion representing 1% of all benign laryngeal tumors. ⁽¹⁾ Dozens of cases of head and neck organ amyloidosis have been reported in the literature since Borow ⁽²⁾ described the first case in 1873. Immunohistochemical stains, and Congo red staining viewed under polarized light microscopy, or electron microscopic findings of a laryngeal biopsy specimen can confirm the presence of amyloid in the larynx. A high degree of suspicion is necessary since clinical presentation of the disease may mimic that of a laryngeal neoplasm.

Therefore, there is a high risk if the clinician takes the wrong diagnostic approach. We recommend that an adequate deep punch biopsy must be obtained in order to exclude malignancy. Furthermore, an experienced pathologist should examine the lesion histologically with routine stains (stain pink with hematoxylin-eosin stain and show metachromasia with crystal violet) mainly to exclude malignancy. However, tissue specimens should also be stained with Congo red and examined under polarized light microscopy to establish the diagnosis of the disease.

2. CASE PRESENTATION

A 50 year old libyan woman known case of rheumatoid arthritis, presented with a history of progressively hoarseness of voice during the previous 11 months and foreign body sensation in the larynx. She reported no weight loss and no air way obstruction. She had no history of skin atopy. Physical examination of the neck was normal. Flexible nasopharyngolaryngoscopy revealed a smooth swelling, red yellow in color localized on the left true cord. Vocal cord mobility was not impaired. Chest X-ray was normal. We proceeded to perform microlaryngoscopy under general anaesthesia and removal of the mass by using microscissors and forceps.

Pathological examination revealed a mass (measuring 4 ×4 ×6 mm) with a smooth surface. On macroscopic inspection the cut sections were brownish in colour and solid with a soft and elastic consistency.

On microscopy: it was consisting of sub epithelial accumulation of homogenous and fine granular eosinophilic substance with presence of single scattered fibrocytes, positive with Congo-red stain, focal acanthosis and hyper-parakeratosis of the epidermis. No signs of malignancy were seen. (Fig. 1, 2).

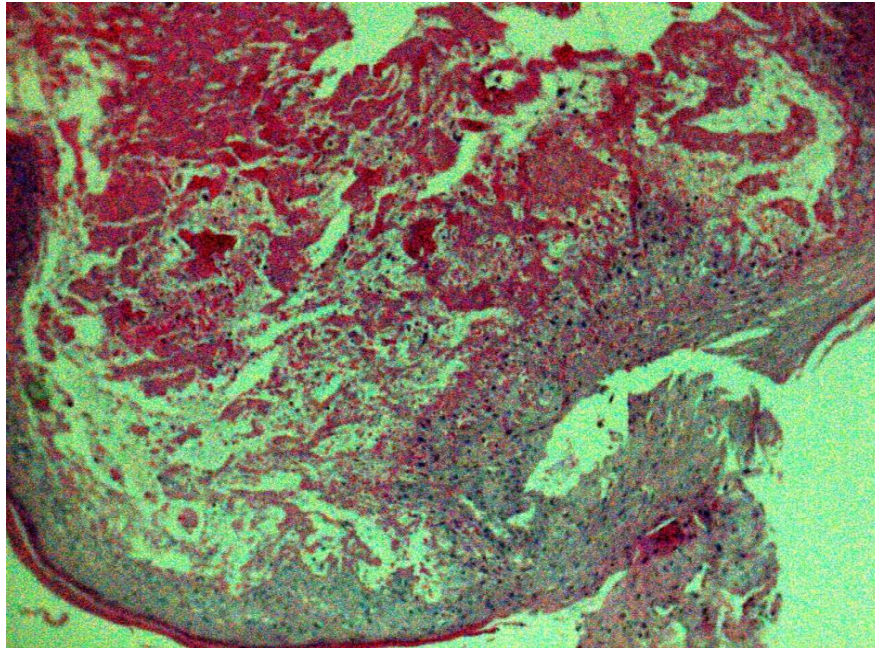


Fig.1 Sub-epithelial accumulation , and fine granular eosinophilic substance with presence of single scattered fibrocytes.

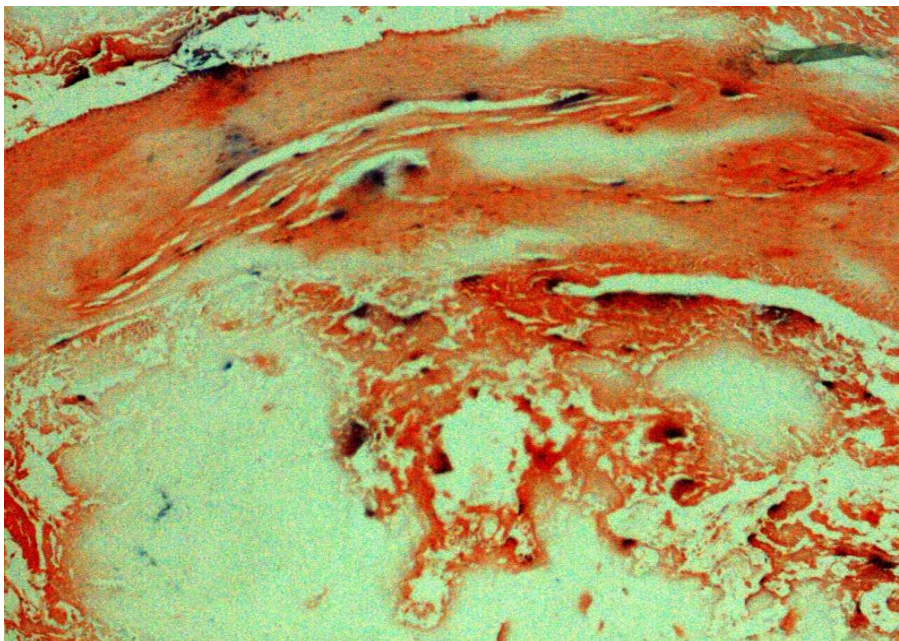


Fig.2 Amyloid deposition seen with Congo-red stain

Further examinations were done to rule out systemic amyloidosis. The patient's complete blood count, erythrocyte sedimentation rate, basic metabolic, biochemical and liver function tests were within normal limits. Serum calcium was also normal. Serum and urine electrophoresis were normal. Based on these findings systemic amyloidosis and multiple myeloma were excluded from the differential diagnosis.

3. DISCUSSION

Amyloidosis is a metabolic protein disturbance in which extracellular protein fibrils are deposited in various tissues. Amyloidosis is classified as systemic or local. According to the type of amyloid, classification of amyloidosis appears as follows for systemic and localized amyloidoses respectively: hereditary amyloidosis, for example, amyloidosis in familial Mediterranean fever with types AA, AF amyloid; idiopathic systemic amyloidosis with AL amyloid; secondary systemic amyloidoses (reactive amyloidosis) and chronic infections, neoplastic diseases with AA amyloid and localized amyloidoses with AL, AA, AK types of amyloid.

Table 1 summarizes the classification of amyloidosis with the accompanying amyloid type.

	Type of amyloid
Systemic amyloidosis	
I. Hereditary amyloidosis (e.g., amyloidosis in familial Mediterranean fever)	AA, AF
II. Idiopathic systemic amyloidosis	AL
III. Secondary systemic amyloidoses (reactive amyloidoses) and chronic infections, neoplastic diseases	AA
Localized amyloidosis	AL, AA, AK

Localized amyloidosis occurs in a variety of organ systems. Both types may affect the upper and lower respiratory tracts. In the past, the extracellular deposition of amyloid in the larynx was commonly misdiagnosed as vocal cord nodules. It is now certain that the latter are due to deposition of fibrin and other factors of local blood exudation and are unrelated to the rare amyloidosis. ^(1,3)

Primary lesions located in the larynx were first reported in 1873; however, the real pathogenesis of the entity has not been fully elucidated until now. Apart from a case of familial primary localized laryngeal amyloidosis in two sisters and primary localized amyloidosis in various human organs, familial primary localized amyloidosis of the larynx has not yet been reported. ⁽⁴⁾

The familial type of the disease (ATTP - type amyloid transthyretin protein) is extraordinarily rare and exhibits an autosomal dominant pattern of inheritance. The extracellular deposits of amyloid may be focal, limited in one tissue or organ, or may present systemic distribution. They rarely show remission but usually tend to increase in size at a slow but progressive rate. The larynx is rarely the first location of systemic amyloidosis; however, the latter should not be ruled out from the differential diagnosis because of its potentially ominous prognosis.

The ventricles and the false and true vocal cords are the most common sites for localized amyloidosis in the respiratory tree. ⁽⁵⁾ Other sites are the eye, the orbits and the major and minor salivary glands, while submucosal deposits have been observed in the nose, paranasal cavities, nasopharynx, oral cavity, oropharynx, bronchotracheal tree and lungs. ⁽⁶⁾

Oral and paranasal amyloidosis is usually a manifestation of systematic amyloidosis, mainly plasma cell dyscrasia. ⁽⁷⁾ Laryngeal amyloidosis usually appears during the fifth and/or sixth decade of life, without specific symptoms, though it most frequently involves hoarseness of the voice. ⁽⁸⁾ Dyspnoea is a common manifestation of the disease.

Regarding the requested laboratory control, in cases of localized laryngeal amyloidosis, Lewis et al. ⁽⁹⁾ studied 22 patients in the Mayo Clinic suffering from amyloidosis located exclusively in the larynx during the period 1950 to 1988 and recommended urine and serum electrophoresis as a basic initial approach. They did not recommend bowel and bone marrow biopsies as absolutely necessary.

The most commonly used method to detect the amyloid protein is the histological staining of biopsy samples excised with Congo red stain. Amyloid is birefringent in polarized light and appears apple-green in color (the so called dichroism) in Congo red stained sections. This should be distinguished from pseudoamyloid, which is often found in vocal cord nodules.

This is of fibrous consistency and represents an amorphous granular degeneration of collagen fibers with sparse disseminations between the fibroblasts. ⁽¹⁰⁾ Potassium permanganate may be used for the discrimination of protein composition between type A protein (AA) which dissolves, and amyloid (AL) of light chain, which is resistant and appears in the sections. Laryngeal amyloidosis is a type of localized amyloidosis that is characterized by monoclonal deposits of the light chain type (AL). ⁽⁹⁾

Magnetic resonance imaging (MRI) is the technique of choice to detect the most specific features, since amyloid deposits present an intermediate T1-weighted signal intensity and low T2-weighted signal intensity, and MRI is thus considered to be a more specific technique than CT scanning. ⁽¹¹⁾ Unfortunately, in our case, it was not possible to conduct an MRI scan due to technical reasons (out of order). Thus, regarding the diagnostic approach, a high disease suspicion index followed by serum and urine electrophoresis, rectal biopsy, punch biopsy during direct laryngoscopy and MRI constitute an effective diagnostic procedure. Of course, the pathologist - as mentioned above - contributes significantly in the diagnosis of the disease.

In our case, the excised mass was round shaped, uncapsulated, tumor-like yellow-gray nodule. Microscopically, the mass was composed of sub epithelial accumulation of homogenous and fine granular eosinophilic substance with presence of single scattered fibrocytes, positive with Congo-red stain, focal acanthosis and hyper-parakeratosis of the epidermis.

There are indications that immunological mechanisms are involved in the pathogenesis of human amyloidosis and that the latter could be a complication in immunodeficient conditions. Factors that affect the human immune response, such as steroids, immunosuppressive and ionizing radiation, may accelerate the appearance of the disease. Some types of amyloid deposits may be the result of an immunocyte dyscrasia or mucosa associated lymphoid tissue neoplasms. ⁽¹²⁾ Although systemic amyloidosis presents a poor prognosis due to accumulation of amyloid protein in a variety of vital organs affecting their structure and function, localized primary amyloidosis carries a much better prognosis. Therefore, it is crucial to identify the local presence of the amyloid protein by the above-mentioned procedures, since in contrast to systemic amyloidosis, local amyloidosis presents a very good prognosis.

The treatment of primary localized laryngeal amyloidosis is surgical and may be performed with the help of laser technology. Endoscopic CO2 laser excision of the mass should be the first line of therapy. The course of the condition under discussion is slow but sudden relapse is possible. ⁽¹³⁾ However, relapse may occur after a long time period; long-term follow up is essential for at least 5 to 7 years. ⁽¹⁾ In this case, assessment for the systemic form of the disease was not observed in a 6 month follow-up; there was no disease recurrence and the patient was free of symptoms in this time period and was in a good state of health. It is important to mention that in contrast to local amyloidosis which carries a much better prognosis, assessment for the systemic form of the disease carries a poor prognosis because the accumulation of amyloid fibrils in the tissues interferes with their normal structure and function. In the study by Biewend et al. ⁽¹⁾ a mean 7.6 year follow up of two patients with no recurrence was observed, while in another study by Piazza et al. ⁽¹⁴⁾ 17 out of 32 patients were asymptomatic in a 20-year follow up. In secondary amyloidosis, a reduction in amyloid deposition may occur following successful treatment of the underlying disease.

4. CONCLUSIONS

Our case report presented to us as case of rheumatoid arthritis presented with hoarseness of voice. The diagnosis of primary localized amyloidosis is always established histologically; surgical excision of the mass by microlaryngoscopy under general anaesthesia by using microscissors and forceps.

REFERENCES

- [1] Biewend ML, Menke DM, Calamia KT: The spectrum of localized amyloidosis. A case series of 20 patients and review of the literature. *Amyloid* 2006, 13:135-142.
- [2] Borow A: Amyloide degeneration von larynx tumoren. Canule seiber jahre lang Getrager. *Arch Klin Chir* 1873, 15: 242-246.
- [3] Jyoti PD, Mukesh M . Primary exophytic laryngeal amyloidosis presenting as sudden respiratory obstruction; *Indian Jr Otolaryngol. Head And Neck Surgery* 2007, 59:357-359.

International Journal of Novel Research in Healthcare and NursingVol. 3, Issue 1, pp: (42-46), Month: January-April 2016, Available at: www.noveltyjournals.com

- [4] Oguz H, Safak MA, Demirci M, Arslan N: Familial primary localized laryngeal amyloidosis in two sisters. *Kulak Burum Bogaz Ihtis Derg* 2007, 17: 283-286..
- [5] Vasquez de la IF, Sanchez-Fernandis N, Martinez J, Ruba San, Rama LJ, Fernandez GS. Amyloidosis in the ORL field. *Acta Otorrnolaringol. Esp.* 2006, 57 :145-148.
- [6] Lachman HJ, Hawkins PN: Amyloidosis of the lung. *Chron Resp Dis* 2006, 3:203-214.
- [7] Lester DRT, Gregory AD, Bruce MW. Amyloidosis of the Larynx: A Clinicopathologic Study of 11 Cases; *Mod. Pathol.* 2000, 13: 528–535.
- [8] Nishi SO, Payal M, Divij S, Raghav M. Localized laryngeal amyloidosis: A case report and review of literature. *Global Advanced Research Journal of Medicine and Medical Sciences.* 2012, 1: 45- 48.
- [9] Lewis JE, Olsen KD, Kurtin PJ, Kyle RA: Laryngeal amyloidosis: a clinicopathologic and immunohistochemical review. *Otolaryngol Head Neck Surgery* 1992, 106: 372-377.
- [10] Michaels L, Hyam VJ: Amyloid in localized deposits and plasmacytomas of the respiratory tract. *J Pathol* 1979, 128:29- 38.
- [11] Hegarty JL, Rao VM: Amyloidoma of the nasopharynx: CT and MR findings. *Am J Neuroradiol* 1993, 14:215-218.
- [12] Thompson LD, Derringer GA, Wenig BM: Amyloidosis of the larynx: a clinicopathological study of 11 cases. *Mod Pathol* 2000, 13:528-535.
- [13] Siddachari RC, Chankar DA, Pramesh CS, Naresh KN, de Sousa CE, Dcruz AK: Laryngeal amyloidosis. *J Otolaryngol* 2005, 34: 60-63.
- [14] Piazza C, Cavaliere S, Focolli P, Toninelli C, Bolconi A, Peretti G: Endoscopic management of laryngotracheobronchial amyloidosis: a series of 32 patients. *Eur Arch Otolaryngol* 2003, 260:349-354.